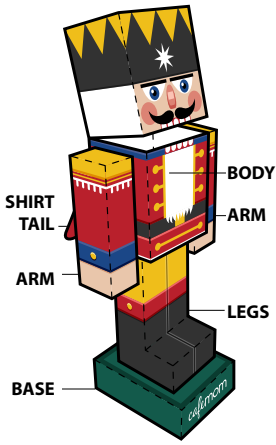
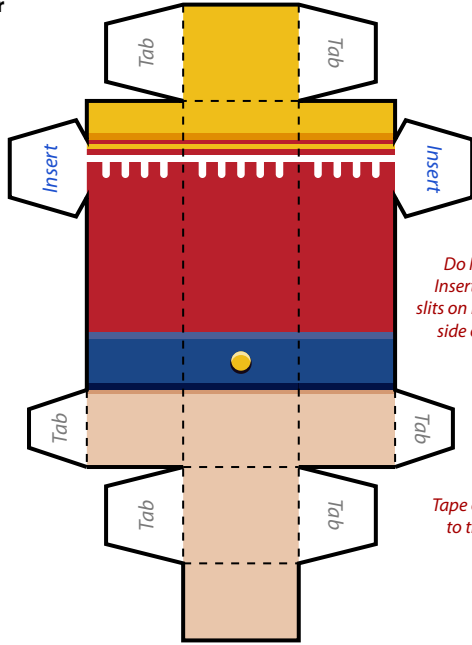


Print template on sturdy paper

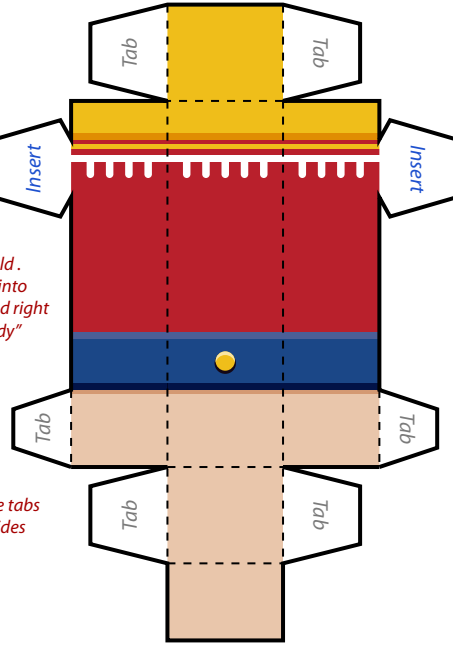


This is what your assembled NUTCRACKER Paper Foldable will look like!

LEFT ARM



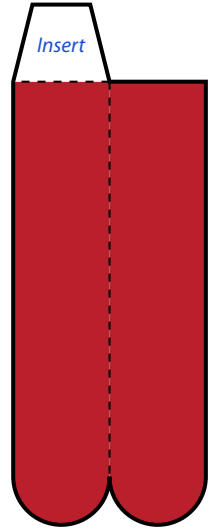
RIGHT ARM



Do Not Fold. Insert tabs into slits on left and right side of "Body"

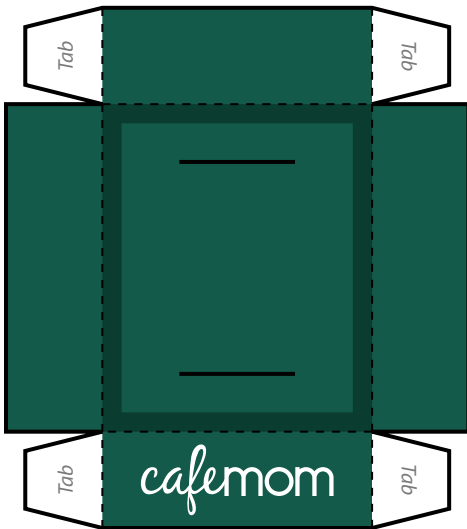
Tape or glue tabs to the insides

SHIRT TAIL



Fold along dotted line. Then tape or glue sides together

BASE

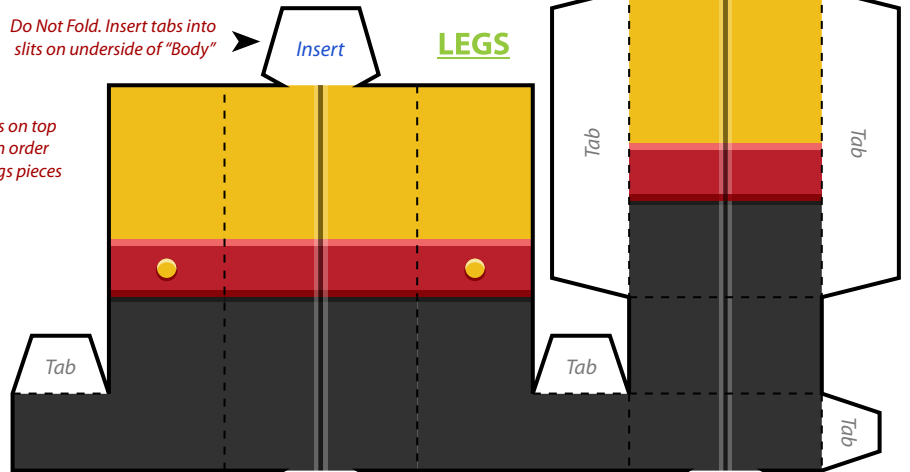


Cut along solid black outline

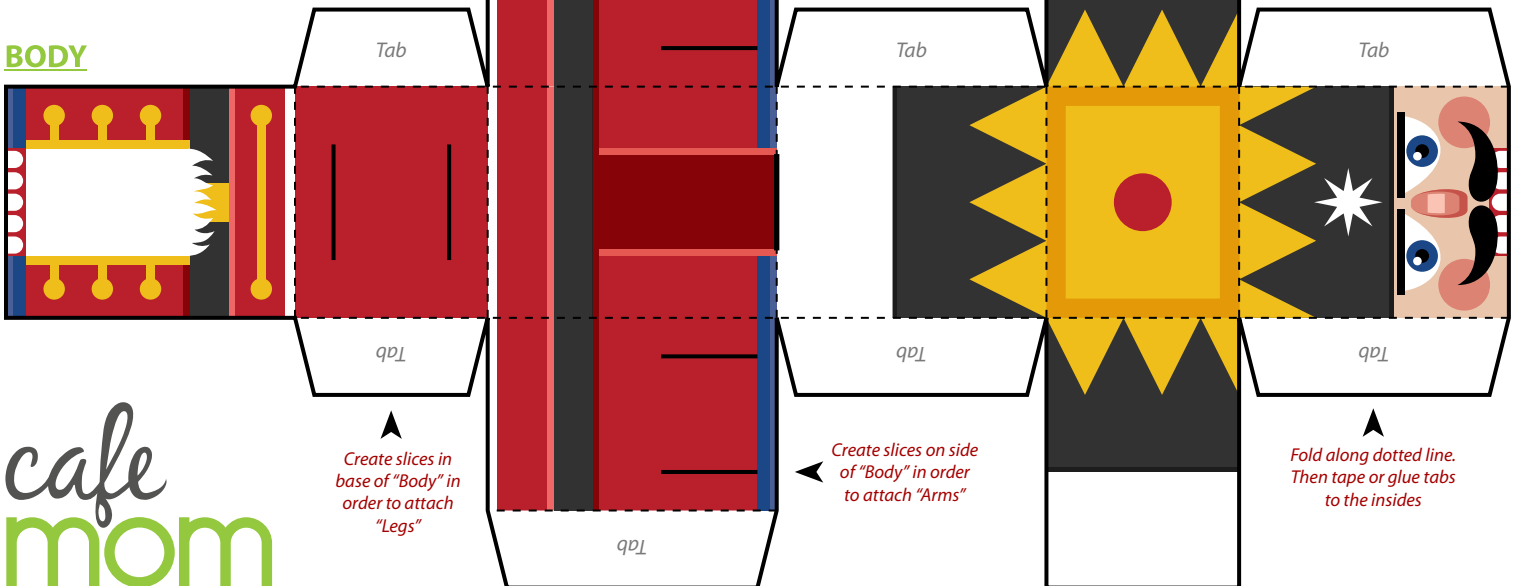
Do Not Fold. Insert tabs into slits on underside of "Body"

Create slices on top of "Base" in order to attach legs pieces

LEGS



BODY



Fold along dotted line. Then tape or glue tabs to the insides

Do Not Fold. Insert tabs into top side of "Base"

Create slices in base of "Body" in order to attach "Legs"

Create slices on side of "Body" in order to attach "Arms"

Fold along dotted line. Then tape or glue tabs to the insides

