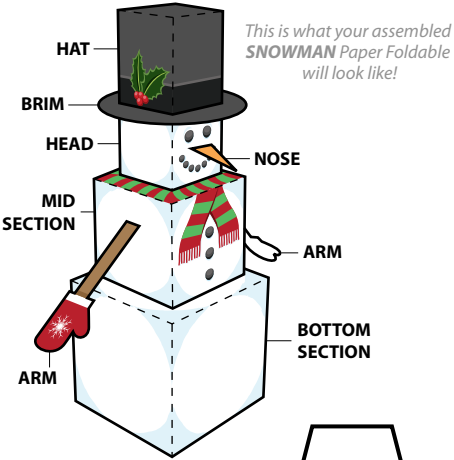
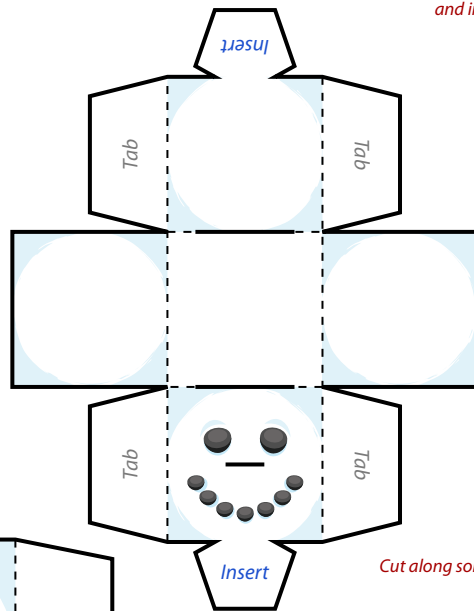


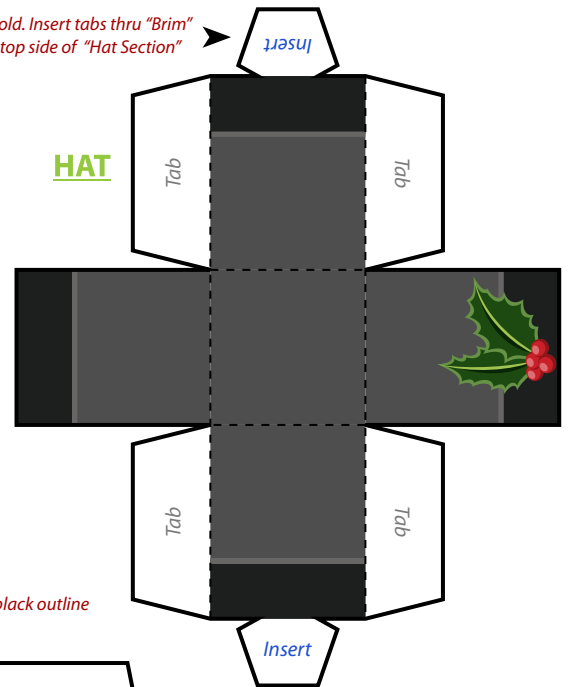
Print template on sturdy paper



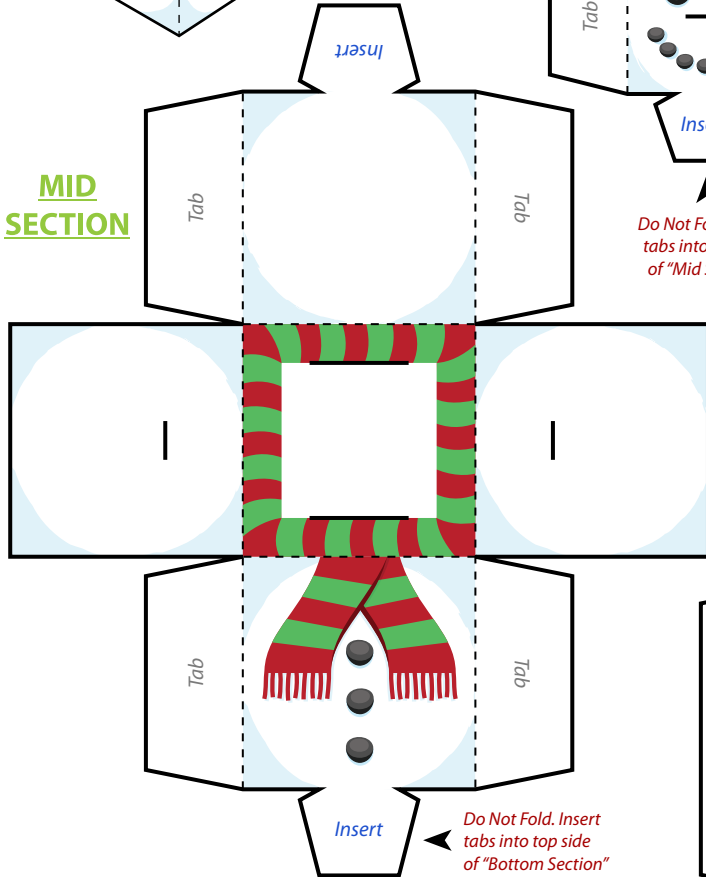
HEAD



Do Not Fold. Insert tabs thru "Brim" and into top side of "Hat Section"



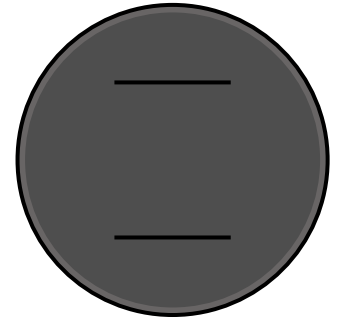
MID SECTION



Do Not Fold. Insert tabs into top side of "Mid Section"

Cut along solid black outline

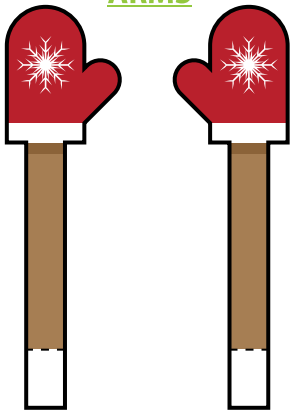
BRIM



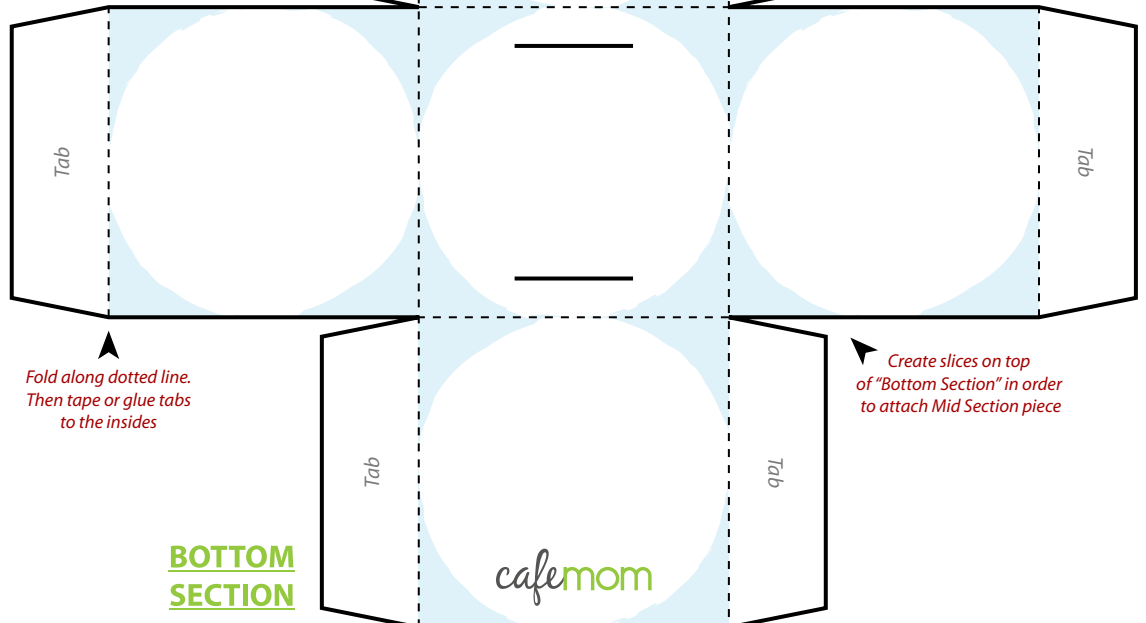
CARROT NOSE



ARMS



Insert tabs into sides of "Mid Section"



Fold along dotted line. Then tape or glue tabs to the insides

Create slices on top of "Bottom Section" in order to attach Mid Section piece

BOTTOM SECTION