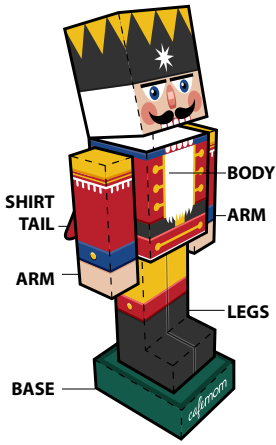
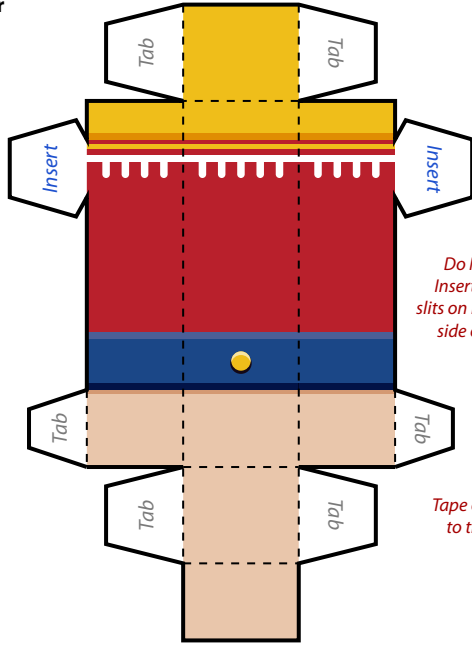


Print template on sturdy paper

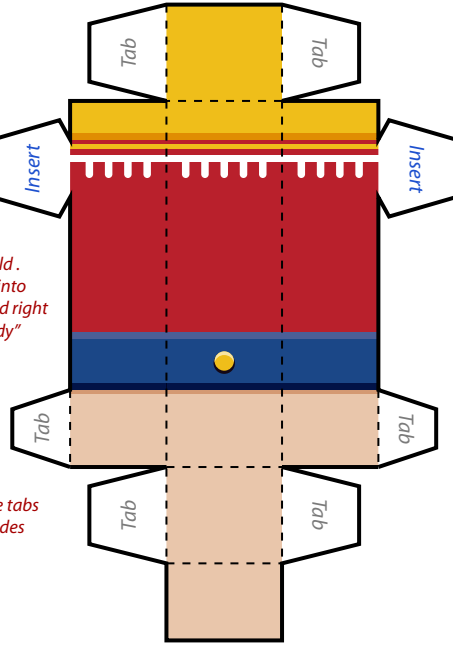


This is what your assembled NUTCRACKER Paper Foldable will look like!

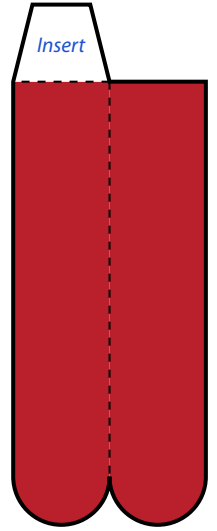
LEFT ARM



RIGHT ARM



SHIRT TAIL

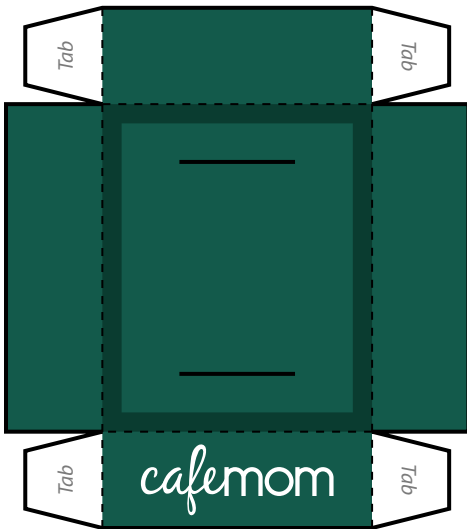


Do Not Fold. Insert tabs into slits on left and right side of "Body"

Tape or glue tabs to the insides

Fold along dotted line. Then tape or glue sides together

BASE

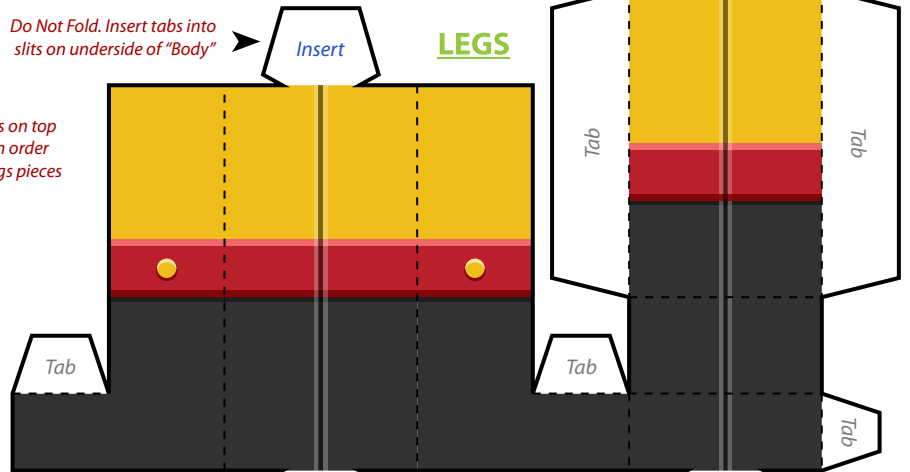


Cut along solid black outline

Do Not Fold. Insert tabs into slits on underside of "Body"

Create slices on top of "Base" in order to attach legs pieces

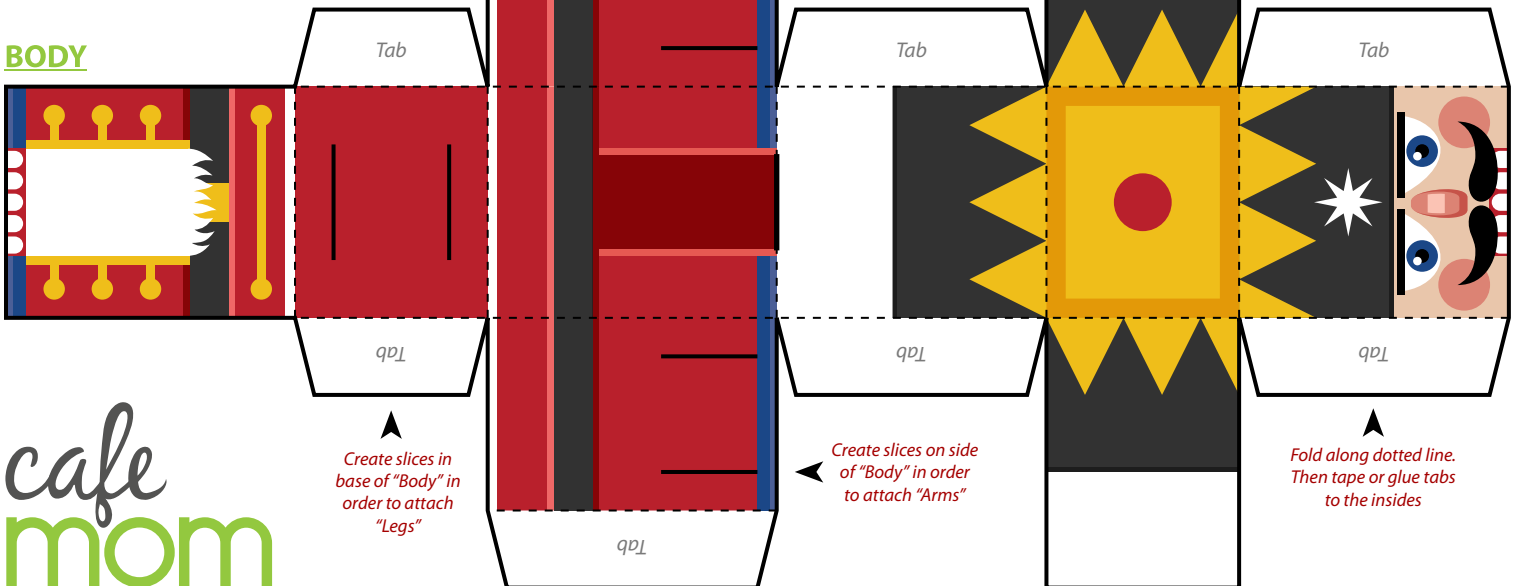
LEGS



Fold along dotted line. Then tape or glue tabs to the insides

Do Not Fold. Insert tabs into top side of "Base"

BODY



Create slices in base of "Body" in order to attach "Legs"

Create slices on side of "Body" in order to attach "Arms"

Fold along dotted line. Then tape or glue tabs to the insides

